

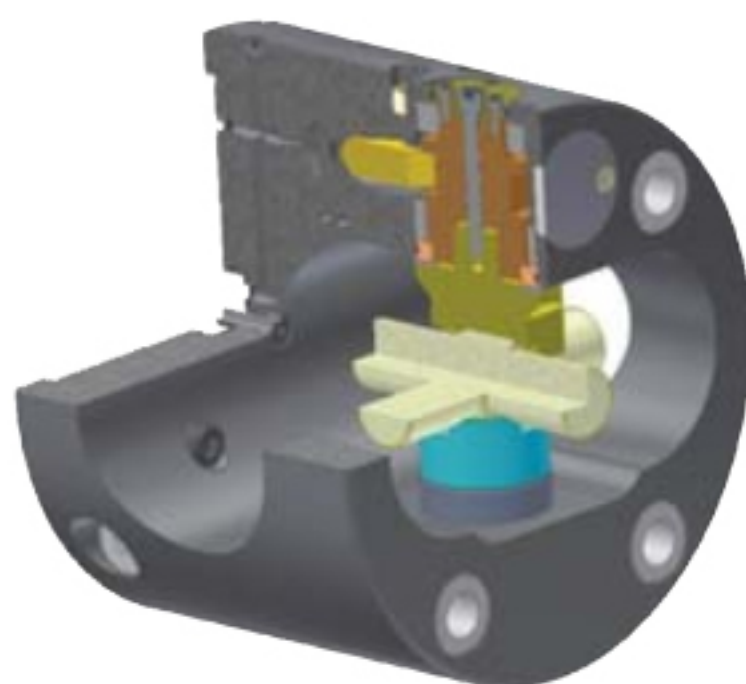
# IAH 自动分度卡盘

## Auto-Indexing Chuck

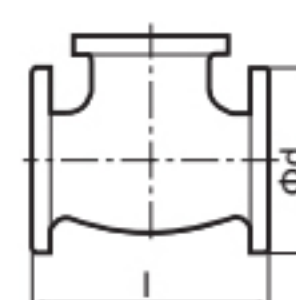


- Machine multiple surfaces in a single clamping
- On-the-fly indexing
- Accurate, durable indexing system
- Index positions 4 x 90° or 8 x 45°

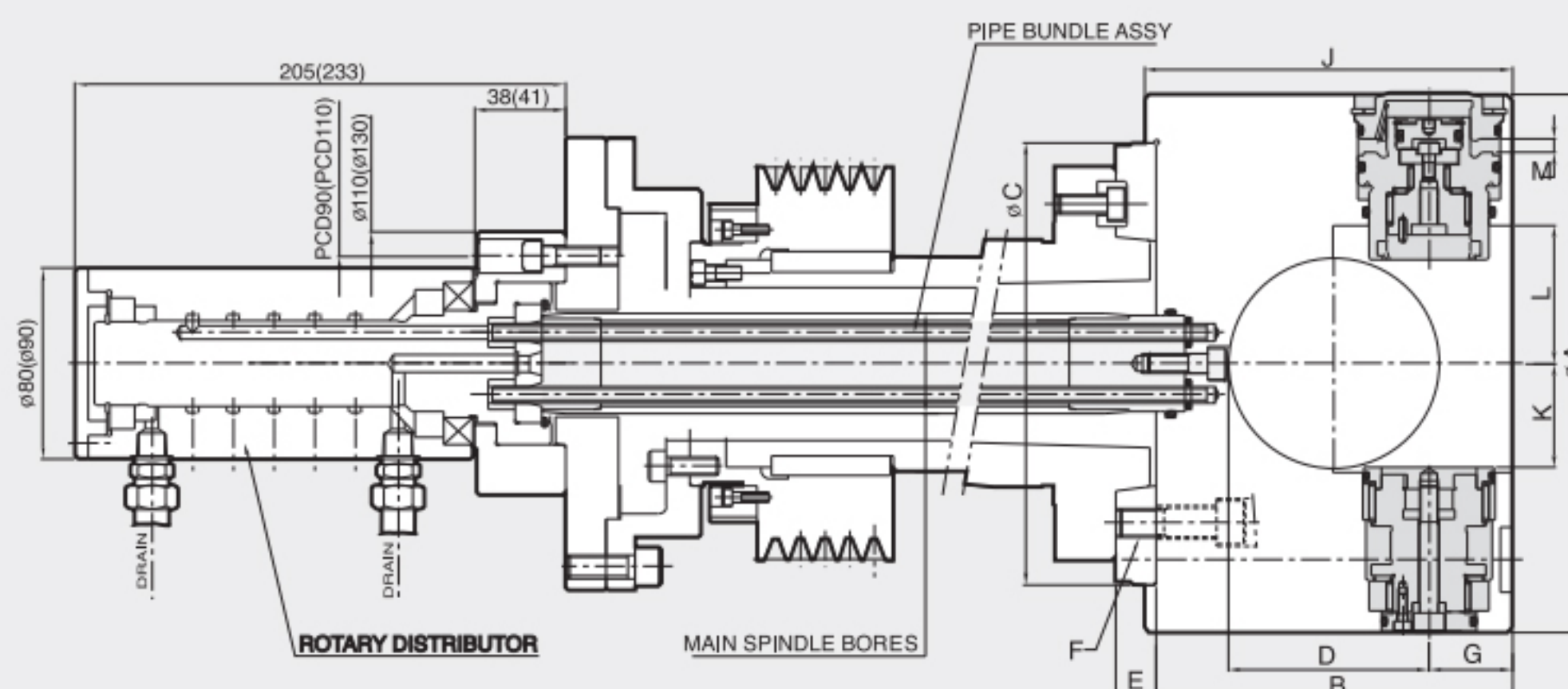
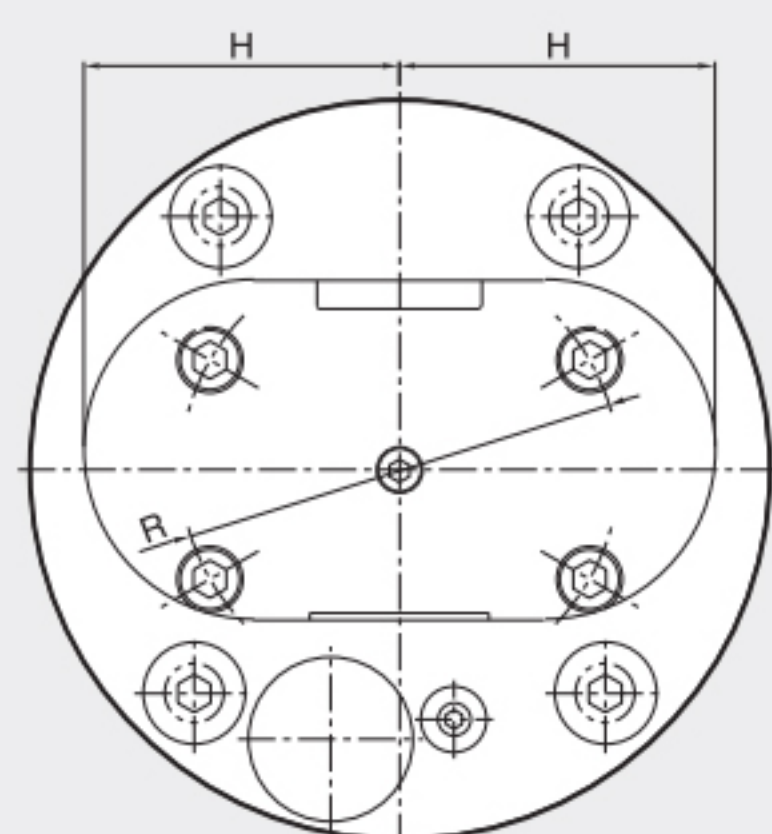
- 一次夹持就可以进行多面加工
- 机械主轴在回转中也可以自动移换角度
- 内装止回阀，在发生停电等紧急情况时也可以确保安全
- 可以分割成 4×90° · 8×45° · 获得高分割精度



### SPECIAL CHUCK



	Max. Workpiece Size 最大工件尺寸	
	Φd [mm]	l [mm]
IAH-225	60	100
IAH-250	65	160
IAH-275	80	220
IAH-315	100	230
IAH-350	135	240
IAH400	170	260
IAH-500	220	310
IAH-670	300	400



- bracketed dimensions refer to models IAH-400 and larger.
- 括号内的尺寸是产品型号IAH 400和更大的

### Dimensions

	ΦA	B	ΦC(h7)	D	E	F	G	H	J	K	L	M	ΦR
IAH-225	225	149	185	84	25	M12	35	95	154	46	58	11.5	133.4
IAH-250	250	185	210	113	25	M12	40	106	190	46	55	20	133.4
IAH-275	280	208	210	125	25	M16	48	125	213	57	67	20.5	171.4
IAH-315	315	227	235	136	25	M16	50	136	232	70	85	22	171.4
IAH-350	350	235	290	148	30	M20	50	145	240	84	102	23	235
IAH400	400	253	290	160	30	M20	60	165	259	100	114	30	235
IAH-500	500	301	380	200	35	M20, M24	68	205	308	133	157	35	235
IAH-670	670	465	380	286	40	M24	90	275	470	176	214	40	330.2

### Specifications

Type	Max. Clamping Force	Main Spindle Bore	Max. Speed	Weight	GD <sup>2</sup>	Max. Workpiece Size	
	夹紧力 [kgf]	主轴孔径 [mm]	最高转速 [r.p.m.]	重量 [kg]	容许工作惯性 [kgf·m <sup>2</sup> ]	最大工件尺寸 ØS[mm]	T[mm]
IAH-225	1270	OVER 45	2800	29	0.9	60	100
IAH-250	1730		2400	44	1.7	65	160
IAH-280	2550		2000	56	2.8	80	220
IAH-315	2550		1800	75	5.0	100	230
IAH-350	2550		1800	100	8.0	135	240
IAH-400	3530	OVER 55	1200	145	15.0	170	260
IAH-500	4670		900	230	25.4	220	310
IAH-670	5890		600	540	32.5	300	400