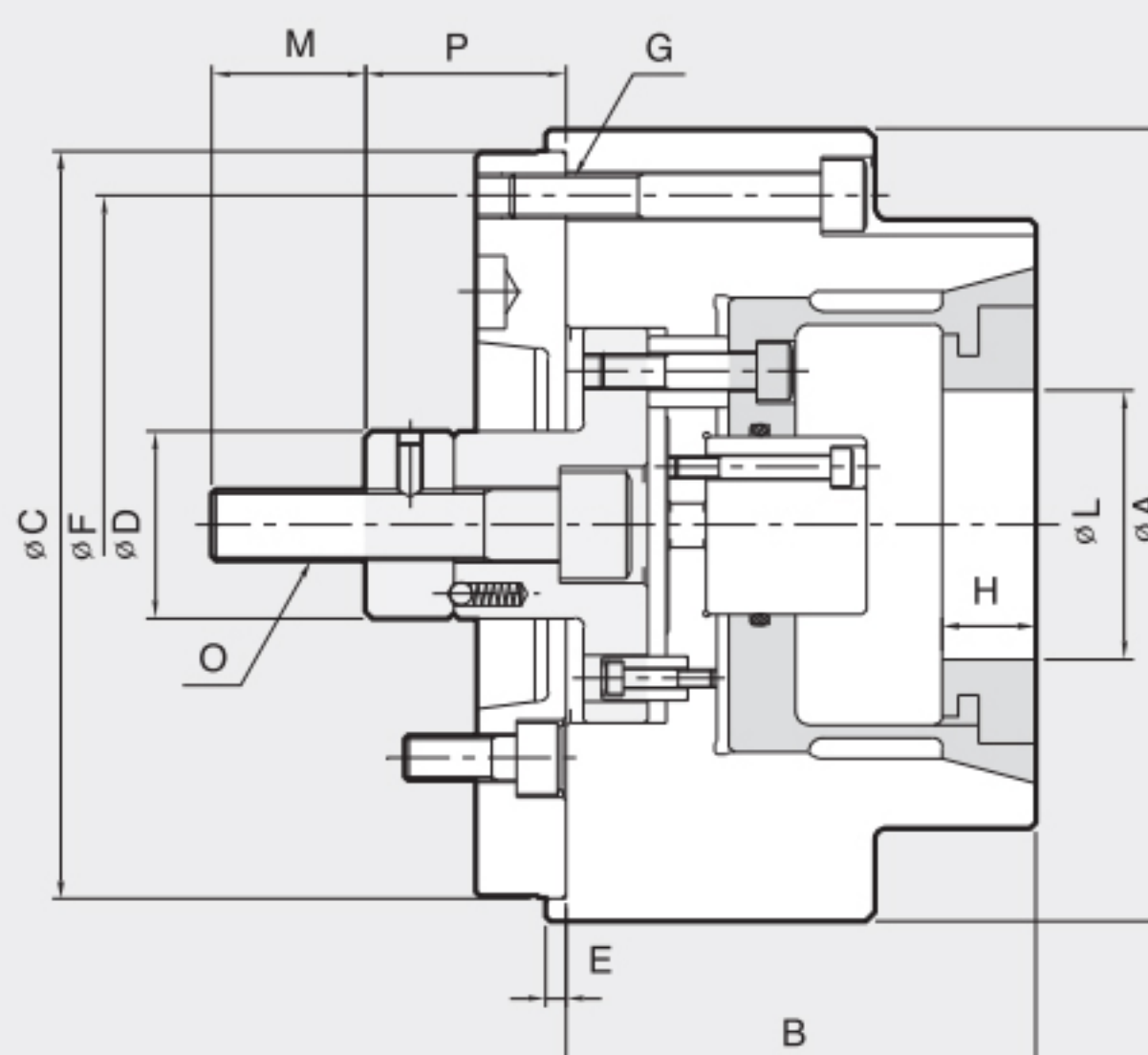
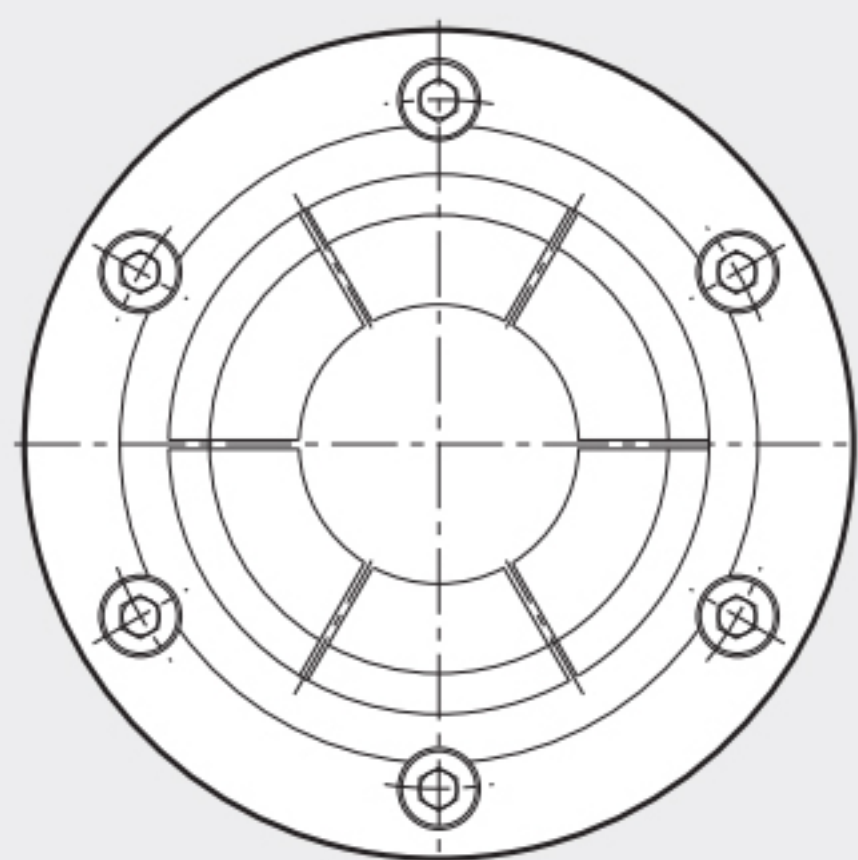




**SPECIAL CHUCK**

- Interchangeable top jaws grip the workpiece O.D.
- Workpiece is pulled down to location for high accuracy machining
- Air sensing available
- Air / Coolant through the spindle available

- 外径筒夹·是快换夹头型夹具
- 夹持时可将工件贴紧定位块·可保证良好的垂直度和同轴度精度
- 可带有端面气检功能
- 可带有中心气吹功能



### Dimensions

	ΦA	B	ΦC(h7)	ΦD	E	ΦF	G	H	ΦLmax.	ΦLmin.	M	O	Pmax.	Pmin.
CDO-06	165	115	150	35	5	130	M12	30	50	15	36	M16	26	23
CDO-08	210	125	200	42	5	180	M12	35	90	80	36	M20	32	29
CDO-10	250	145	230	52	5	210	M16	45	130	80	46	M24	35	32
CDO-12	300	170	230	52	5	270	M16	50	180	100	50	M24	36	32

### Specifications

Type	Max. Clamping Force	Max. Drawbar Pull	Jaw Stroke Dia.	Plunger Stroke	Clamping Range		Max. Speed	Weight	GD <sup>2</sup>
	夹紧力 [kgf]	拉杆最大拉力 [kgf]	夹头张开 [mm]	拉栓行程 [mm]	夹持范围 [mm]		最高转速 [r.p.m.]	重量 [kg]	容许工作惯性 [kgf·m <sup>2</sup> ]
CDO-06	2800	1500	1.6	3	50	15	4500	11	0.11
CDO-08	4600	2500	1.6	3	80	40	4000	23	0.44
CDO-10	6500	3500	1.6	3	130	80	3300	49	1.76
CDO-12	7500	4000	2.0	4	180	100	2500	67	3.10