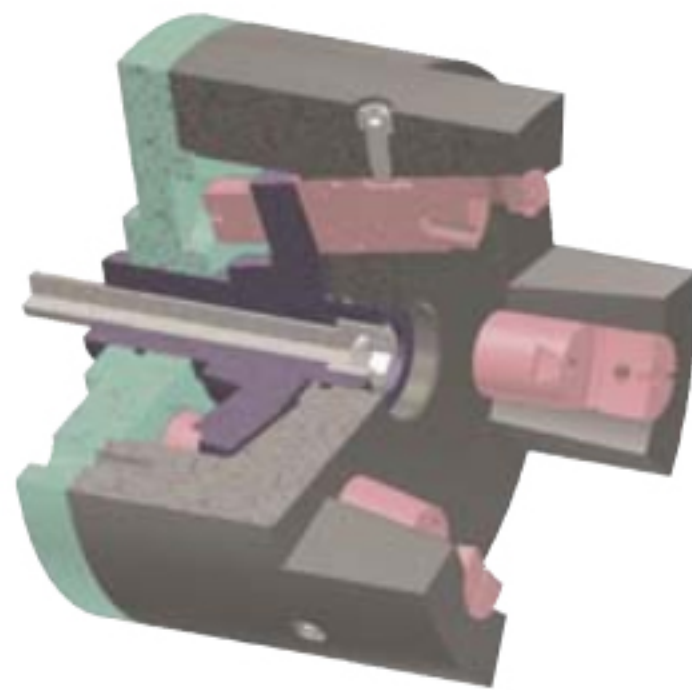


# POL 外销柄轴卡盘

## Outside Pin Arbor Chuck

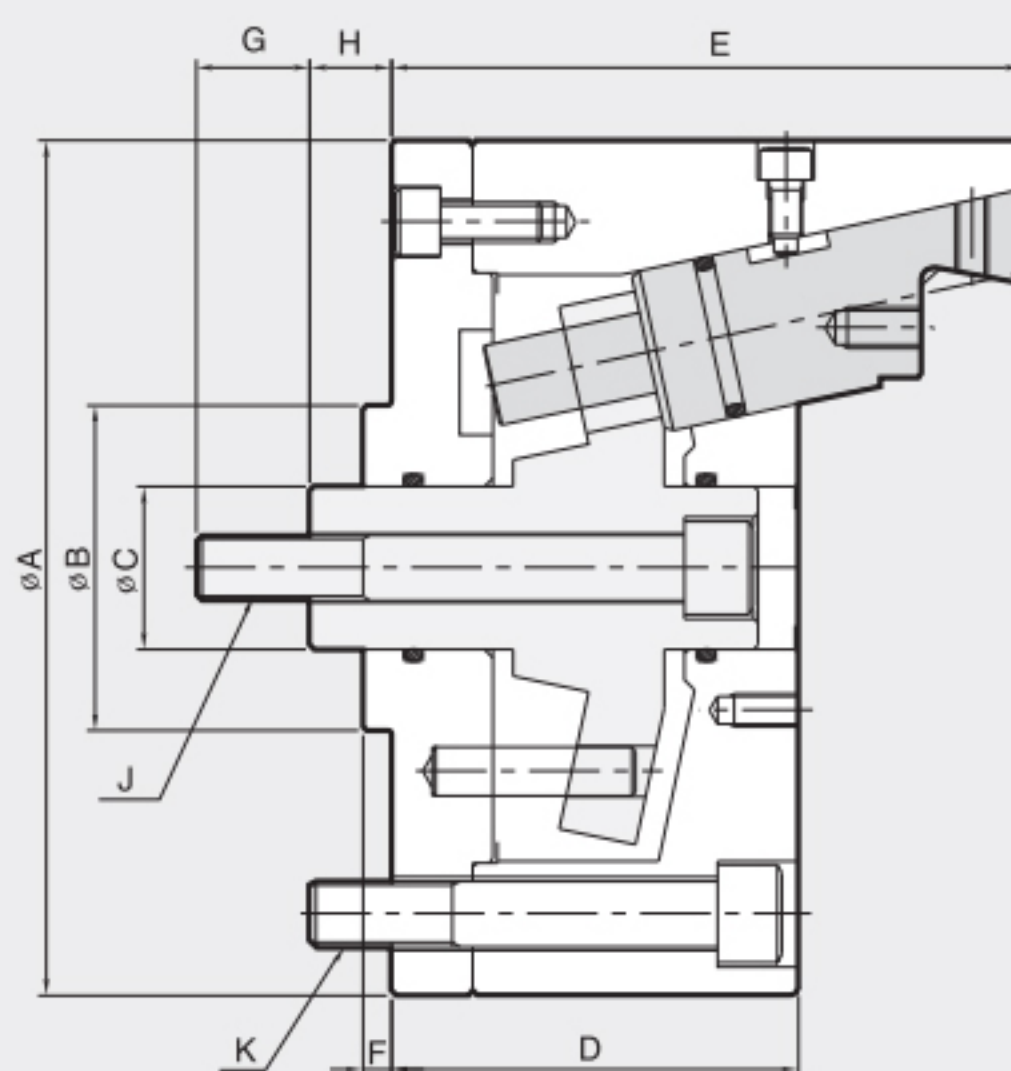
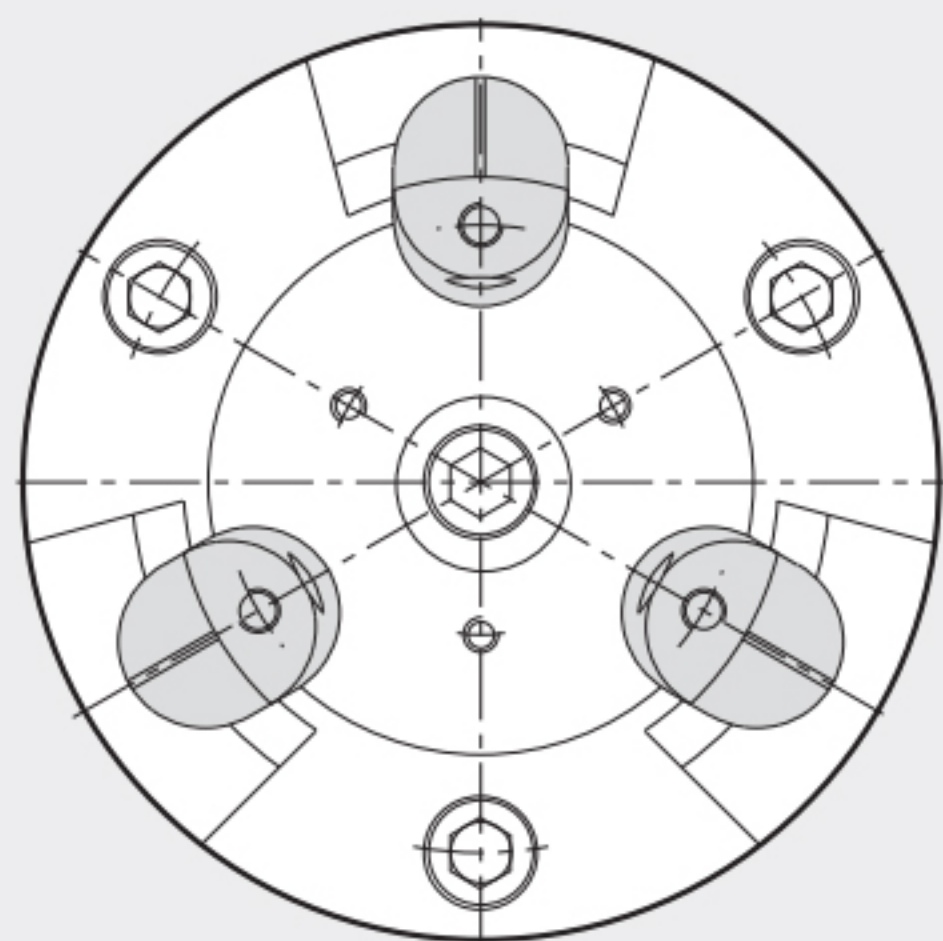
- Ideal for second operation O.D. gripping
- Active pull-down for high precision
- Counter centrifugal gripping reduces distortion

- 适合精加工时外径的夹持
- 夹紧的过程中可将零件在贴紧定位面·夹持刚性·定心精度高
- 可防止铁屑和异物进入卡盘本体内·精度稳定性好·高转速时·卡爪仍可保持高的夹紧力



**SPECIAL CHUCK**

Special Chuck



### Dimensions

	ΦA	ΦB(h7)	ΦC	ΦD	E	F	G	Hmax.	Hmin.	J	K
POL-80	130	60	24	72	103	5	20	18	10	M12	3-M8 PCD100
POL-100	162	80	30	90	130	7	30	22.5	12.5	M16	3-M12 PCD130
POL-140	210	80	40	100	155	7	30	25	15	M16	3-M16 PCD170
POL-180	250	80	45	110	165	7	30	25	15	M18	3-M16 PCD210
POL-230	320	120	50	130	200	7	40	30	20	M20	6-M16 PCD270
POL-300	400	-	60	137	248	7	40	25	15	M35	M24

### Specifications

Type	Max. Clamping Force	Max. Drawbar Pull	Jaw Stroke Dia.	Plunger Stroke	Clamping Range		Max. Speed	Weight	GD <sup>2</sup>
	夹紧力 [kgf]	拉杆最大拉力 [kgf]	卡爪行程(直径) [mm]	拉栓行程 [mm]	夹持范围 [mm] Pin Jaw      Top Jaw		最高转速 [r.p.m.]	重量 [kg]	容许工作惯性 [kgf·m <sup>2</sup> ]
POL-80	2250	1200	3.4	8	65~80	15~60	5000	8	0.067
POL-100	3760	2000	4.2	10	86~100	20~80	4500	16	0.2
POL-140	4700	2500	4.2	10	120~140	60~110	3000	27	0.54
POL-180	5640	3000	4.2	10	150~180	100~145	2000	46	1.43
POL-230	7520	4000	4.2	10	-	120~200	2000	70	3.5
POL-300	7520	4000	4.2	10	-	150~270	2000	165	5.6