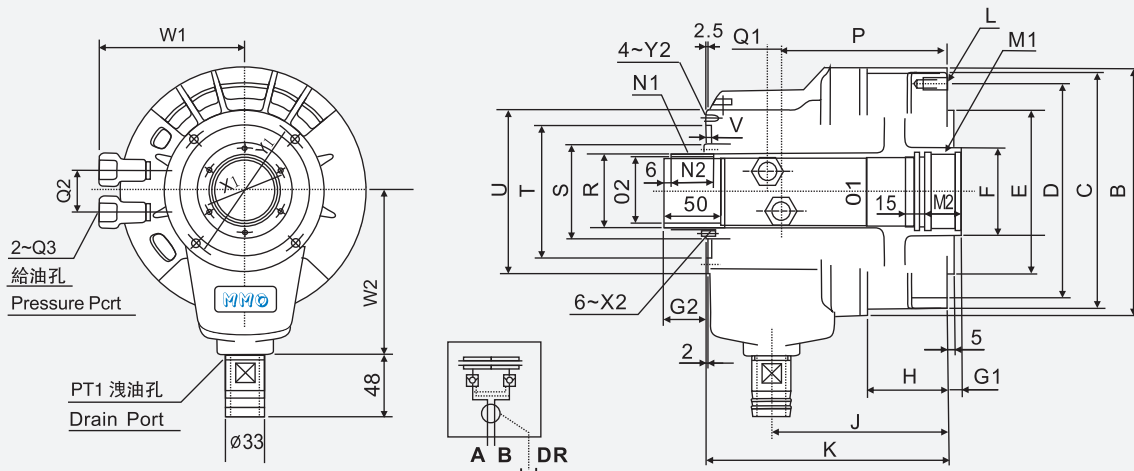




- ❖ 小型輕量：比起傳統的產品，實現小型，輕量。高速回轉時的性能更穩定，更減輕機械的負擔。
- ❖ 更大的貫通孔：比起以往的产品約有提高20%的貫通孔，可使機械的能力充分的活用。
- ❖ 安全構造：藉止回閥的內藏保持推力的構造。
- ❖ Small-sized light weight: Comparing with the traditional product, it is small-sized and a light weight. Make its capacity more stable to reduce the burden of the machinery at high speed turning.
- ❖ The largest bore: Comparing with the old product, it has about 20% more bore full diameter for utilizing the capacity of machinery.
- ❖ The safety machinery: It can retain the gripping force with a check valve.



| 規格 Spec 型號 Model | 活塞面積 Eff.piston area cm ² | | 行程 mm Piston stroke | 最高使用回轉數 r.p.m. Max. speed | 最高使用壓力 MPa Max.pressure (kgf/cm ²) | GD ² kg.m ² Moment or inertia | 重量 kg Weight | 總滲漏量 lit/min Total oil leakage |
|---------------------|--------------------------------------|------------|------------------------|------------------------------|---|--|-----------------|-----------------------------------|
| | 押側 Extend | 拉側 Retract | | | | | | |
| BH-0928 | 53.2 | 50.5 | 10 | 8000 | 4.0(40) | 0.02 | 5.8 | 3.0 |
| BH-1036 | 69.8 | 67.5 | 15 | 8000 | 4.0(40) | 0.05 | 8.5 | 3.0 |
| BH-1246 | 97.3 | 87.9 | 15 | 7000 | 4.0(40) | 0.09 | 13.5 | 3.0 |
| BH-1552 | 146.8 | 136.6 | 20 | 6200 | 4.0(40) | 0.20 | 16.4 | 3.9 |
| BH-1875 | 196.2 | 182.0 | 25 | 4700 | 4.0(40) | 0.40 | 25.8 | 4.2 |
| BH-2091 | 250.6 | 234.1 | 30 | 3800 | 4.0(40) | 0.61 | 33.0 | 4.5 |

| 寸法 Size 型號 Model | A 內徑1.D | B | C | D | E h7 | F | G1 | | G2 | | H | J | K | L | M1 | M2 | N1 | N2 |
|---------------------|------------|-----|-----|-----|---------|-----|------|------|------|------|------|-------|-------|-----------|---------|----|---------|----|
| | | | | | | | max. | min. | max. | min. | | | | | | | | |
| BH-0928 | 90 | 130 | 120 | 100 | 80 | 40 | 10 | 0 | 35 | 25 | 45 | 127.5 | 155 | 6~M8x15 | M33x1.5 | 25 | M34x1.5 | 26 |
| BH-1036 | 105 | 150 | 135 | 115 | 100 | 48 | 15 | 0 | 40 | 25 | 47.5 | 125.5 | 170.5 | 6~M10x20 | M42x1.5 | 25 | M44x1.5 | 28 |
| BH-1246 | 125 | 169 | 156 | 130 | 100 | 65 | 15 | 0 | 40 | 25 | 60 | 135.5 | 193.5 | 12~M10x20 | M55x2 | 30 | M52x1.5 | 32 |
| BH-1552 | 150 | 198 | 188 | 170 | 130 | 70 | 20 | 0 | 45 | 25 | 66 | 145 | 198 | 12~M10x20 | M60x2 | 30 | M58x1.5 | 34 |
| BH-1875 | 175 | 225 | 213 | 190 | 160 | 95 | 25 | 0 | 50 | 25 | 62 | 166.5 | 231 | 12~M10x22 | M85x2 | 35 | M84x2 | 40 |
| BH-2091 | 205 | 255 | 240 | 215 | 180 | 110 | 30 | 0 | 55 | 25 | 64.5 | 180.5 | 250 | 12~M12x24 | M100x2 | 35 | M99x2 | 46 |

| 寸法 Size 型號 Model | O1 H8 | O2 H8 | P | Q1 | Q2 | Q3 | R g7 | S | T H7 | U | V | W1 | W2 | X1 | X2 | Y1 | Y2 |
|---------------------|----------|----------|-------|----|----|-------|---------|-----|---------|-----|---|-----|-----|-----|--------|-----|---------|
| | | | | | | | | | | | | | | | | | |
| BH-1036 | 38 | 36 | 119 | 11 | 24 | PT1/4 | 42 | 55 | 73 | 98 | 4 | 80 | 110 | - | - | 83 | 4~M5x10 |
| BH-1246 | 50 | 46 | 127.5 | 12 | 30 | PT3/8 | 50 | 70 | 90 | 116 | 4 | 98 | 125 | 62 | 6~M4x8 | 98 | 4~M5x10 |
| BH-1552 | 55 | 52 | 135.5 | 12 | 32 | PT3/8 | 56 | 75 | 100 | 128 | 4 | 100 | 130 | 67 | 6~M4x8 | 110 | 4~M6x10 |
| BH-1875 | 80 | 75 | 153.5 | 17 | 36 | PT3/8 | 81 | 100 | 125 | 158 | 4 | 115 | 160 | 92 | 6~M4x8 | 145 | 4~M6x10 |
| BH-2091 | 95 | 91 | 165 | 21 | 34 | PT1/2 | 96 | 120 | 142 | 180 | 5 | 136 | 185 | 110 | 6~M4x8 | 165 | 4~M6x10 |