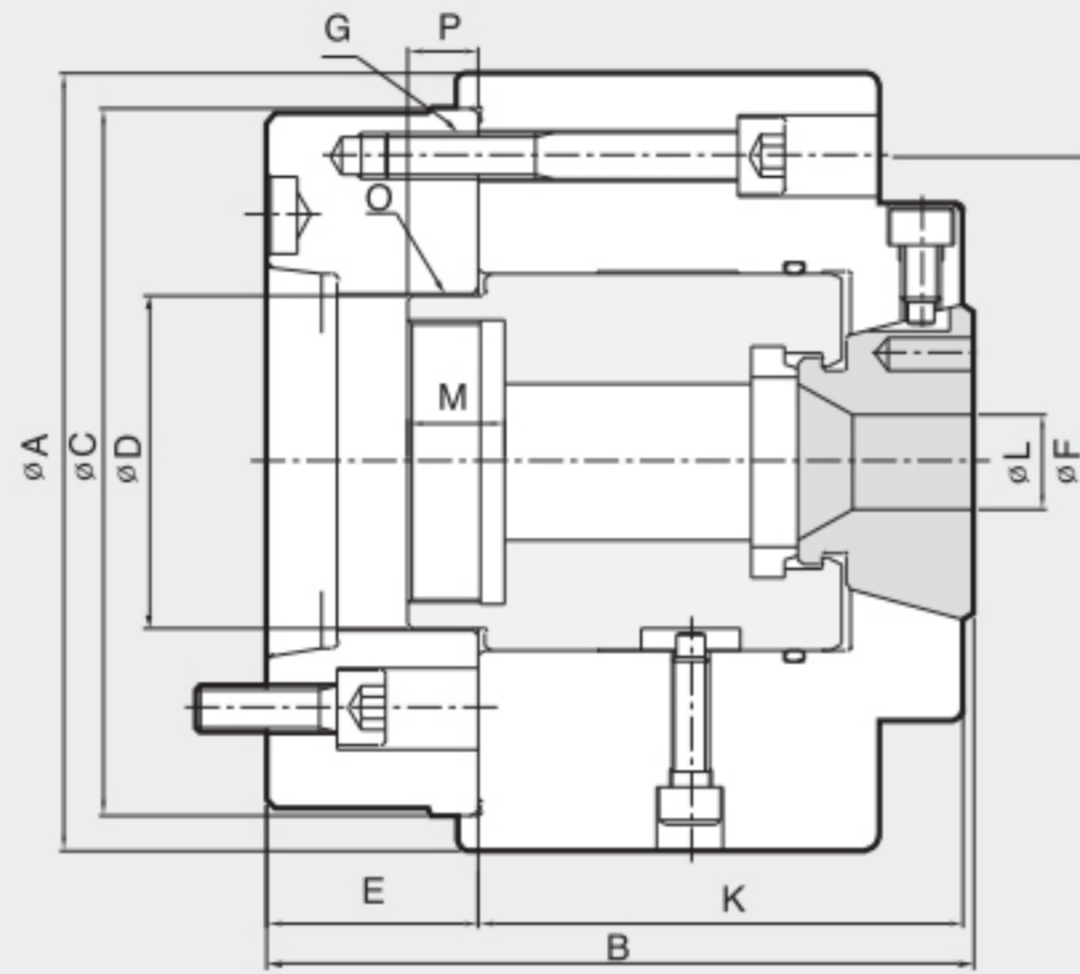




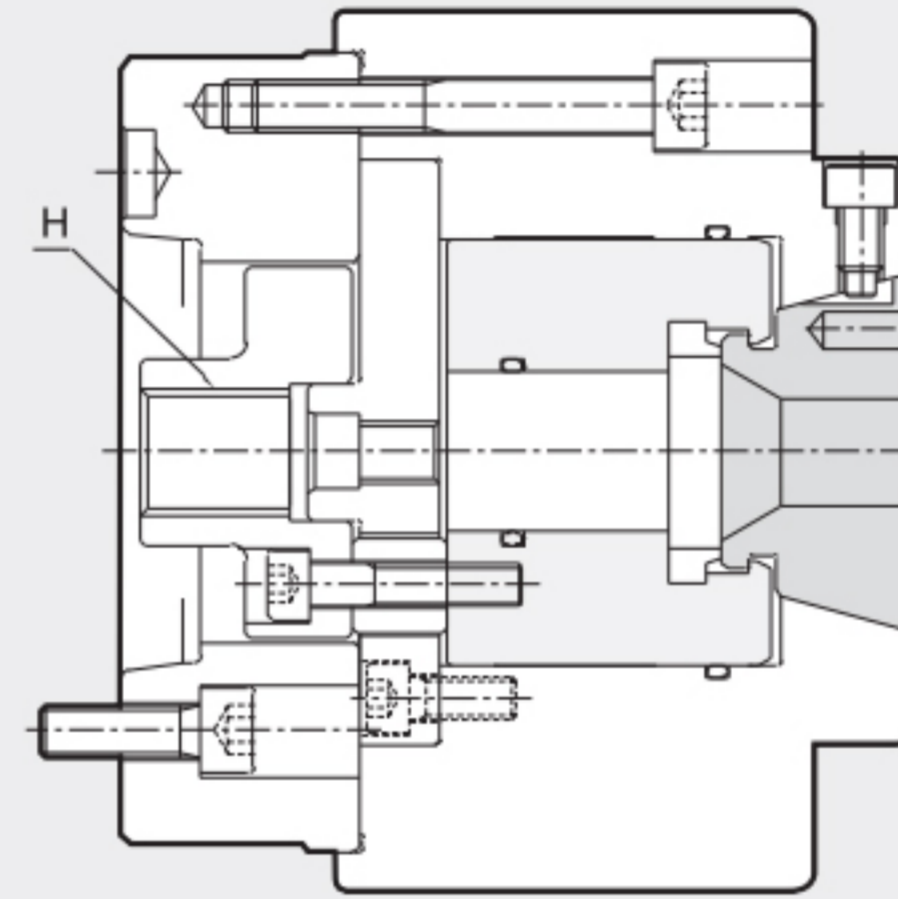
SPECIAL CHUCK

- Quick change rubber -steel segment collet
- Ideal for bar and shaft clamping
- Round, square and hexagonal collets available

- COR橡胶筒夹由橡胶与钢材构成·能安全地夹持棒材与轴类
- 筒夹可以用专用更换治具快换
- 筒夹头适用于圆形、四角型、六角型工件



Bar Work
棒料加工



Chucking work
卡抓直径

Dimensions

	ϕA	B	$\phi C(h7)$	ϕD	E	ϕF	G	H	K	$\phi L_{max.}$	$\phi L_{min.}$	M	O	Pmax.	Pmin.
COR-32	165	150	150	71	45	130	M10	M24	103	32	5	20.5	M60x2.0	16.5	13.5
COR-50	165	150	150	87	45	130	M10	M24	103	50	12	27.5	M74x1.5	23	20
COR-65	180	170	170	103	49	150	M12	M30	119	65	16	25	M90x2.0	25.5	22.5
COR-90	210	190	170	103	55	150	M12	M30	133	90	30	25	M90x2.0	28.5	22.5

Specifications

Type	Max. Clamping Force	Max. Drawbar Pull	Collect Expansion	Plunger Stroke	Chucking Dia.		Max. Speed	Weight
	夹紧力 [kgf]	拉杆最大拉力 [kgf]	夹头张开 [mm]	拉栓行程 [mm]	夹持范围 [mm]		最高转速 [r.p.m.]	
					Bar Work	Chuck Work		
COR-32	6400	3200	1.0	3	5~32	7~32	4500	25
COR-50	8200	4100	1.0	3	12~50	12~50	4500	25
COR-65	9200	4600	1.0	3	16~65	16~65	4000	32
COR-90	13300	6500	2.0	6	30~90	30~90	3500	38